

Psychometric Stream Selector Test

www.rightsaim.com





WHY IS IT IMPORTANT?

- Choosing a stream after Class 10 is one of the biggest decisions in a student's academic journey. This test ensures that the decision is made with clarity, not confusion.
- The test is important because it helps you:
- Know yourself → Choose wisely → Succeed happily

ELIMINATES CONFUSION

Many students feel lost when asked:

"Should I take Science, Commerce, or Arts?"

This test provides scientific guidance instead of guesswork.

AVOIDS PEER & PARENTAL PRESSURE

Sometimes students choose a stream because:

- Friends are doing it
- Parents suggest it
- It "sounds better"

MATCHES YOUR STRENGTHS WITH THE RIGHT STREAM

- What you're good at (aptitude)
- What you enjoy (interest)
- Who you are (personality)

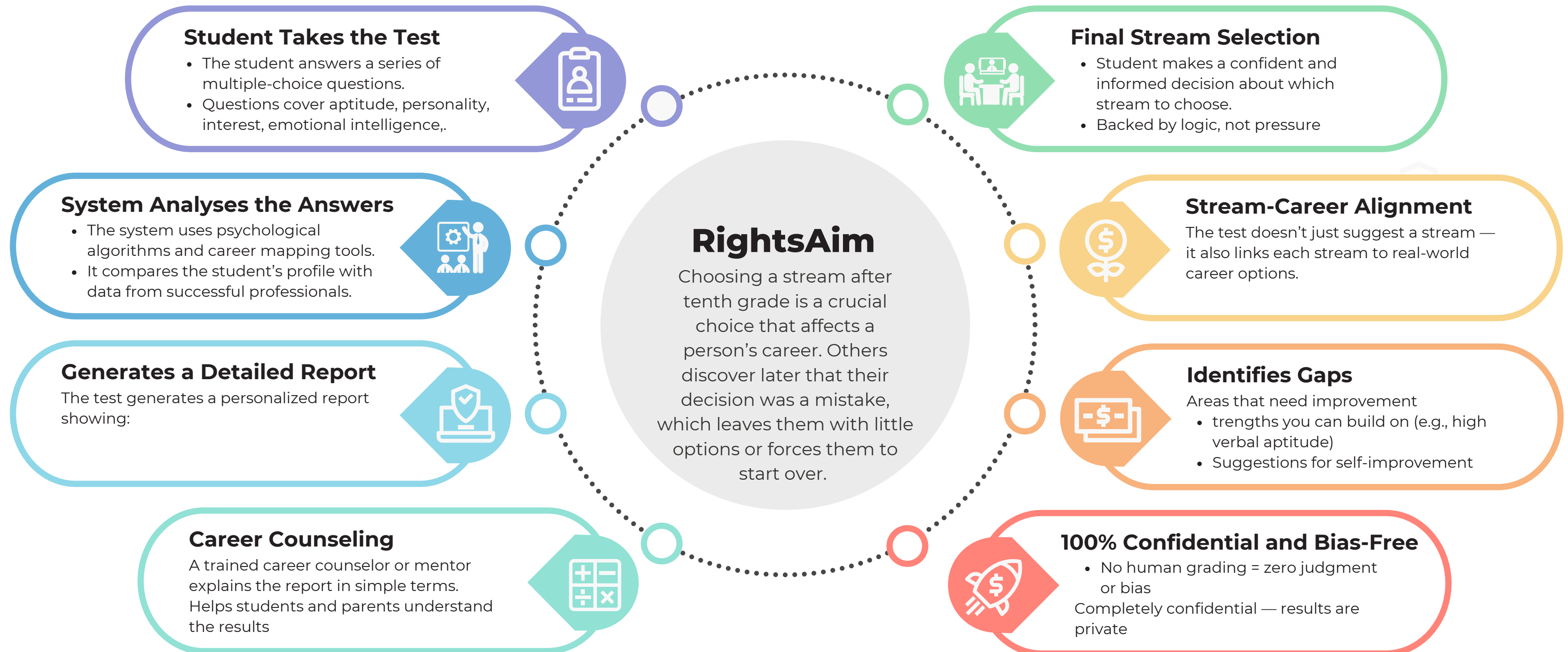
MAKES YOU AWARE OF CAREER OPTIONS

Most students know only 4–5 careers.

This test introduces 20+ career fields that align with your profile — many you might never have considered!



HOW DOES THE PSYCHOMETRIC STREAM SELECTOR TEST WORK?





WHAT IS A PSYCHOMETRIC STREAM SELECTOR TEST?

A psychometric stream selector test is a scientifically designed tool to help students choose the right academic stream (Science, Commerce, Arts/Humanities) after 10th grade based on their



Aptitude

Logical reasoning, numerical ability, spatial awareness



Personality

Identifies areas of genuine interest



Interest

Introvert vs. extrovert, analytical vs. creative



Learning style

Linguistic, logical, spatial, musical, kinesthetic, etc.



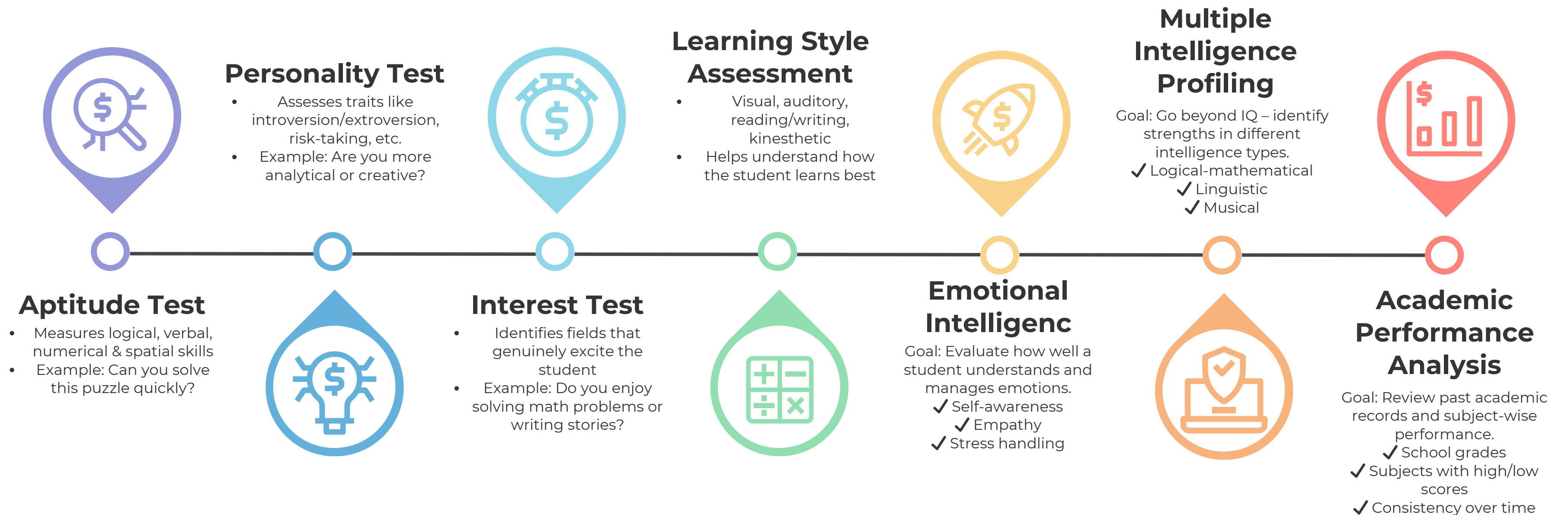
career compass

Explore career paths aligned with their interests, strengths, and value



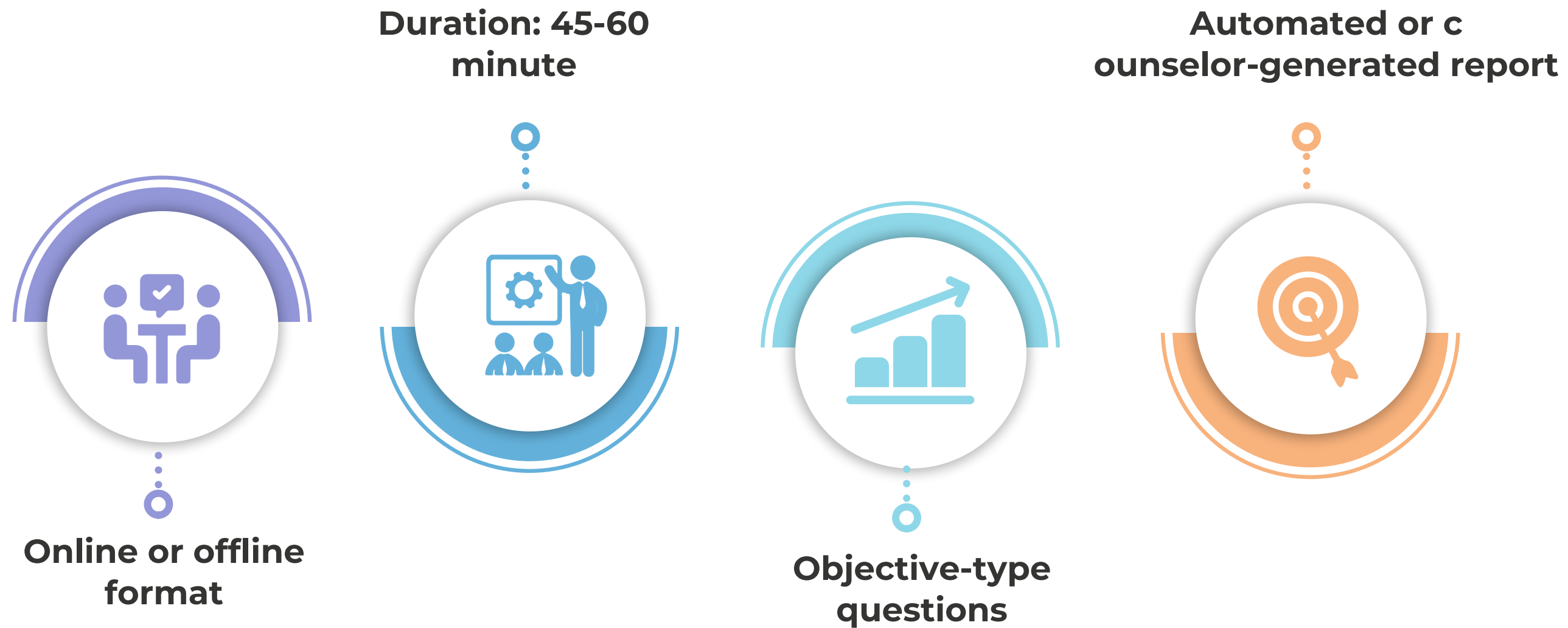
TYPES OF ASSESSMENTS INCLUDED – 7 KEY STEPS

Each of these 7 assessments contributes to understanding the complete profile of a student, helping them choose the most suitable stream.





HOW THE TEST WORKS





BENEFITS OF THE TEST

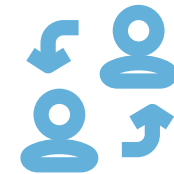
Benefits of the Psychometric Stream Selector Test

01



Informed decision-making

02



Boosts self-awareness

03



Reduces future academic stress

04



Guides Parents and Educators

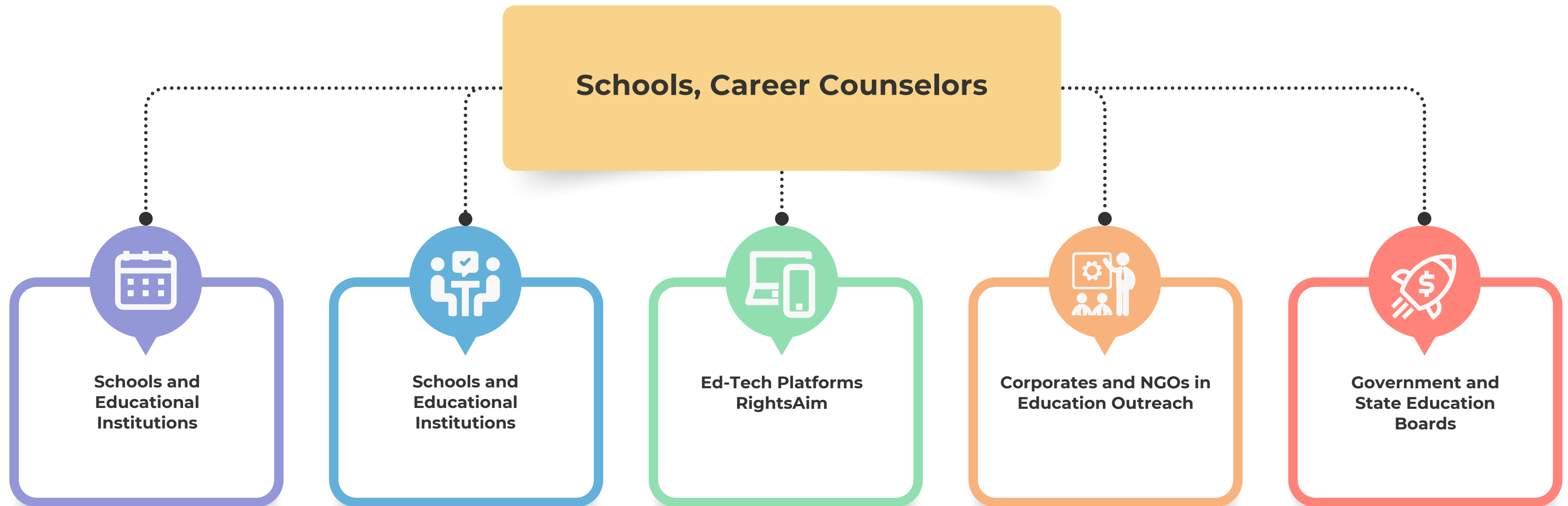
05



Encourages Early Career Planning



REAL-WORLD APPLICATION OF THE TEST





Conclusion

- Stream selection is a critical turning point in a student's academic life.
- The Psychometric Stream Selector Test offers a scientific, unbiased method to guide that decision.
- It analyzes a student's aptitude, personality, interests, and intelligence to provide tailored recommendations.
- The test encourages self-awareness, reduces the risk of career mismatch, and boosts long-term academic satisfaction.

